



# BEAUFORT

## HOUSE

CORPORATE EVENTS AND  
PRIVATE DINING



354 King's Road, London , SW3 5UZ | [Enquiry here](#)  
[beauforthousechelsea.co.uk](http://beauforthousechelsea.co.uk) | [@beauforthousechelsea](#)



# ABOUT US

At Beaufort House Chelsea, we offer a setting that feels both refined and welcoming, a true home away from home for corporate events set on the iconic King's Road, just a moment from Sloane Square Tube Station.

Combining the character of a private members' club with warm, attentive service, we create occasions that are polished, personal and memorable. From private dinners and client entertaining to meetings and celebrations, our dedicated events team ensures every detail is handled with care.



## THE VENUE

Available for private hire seven days a week, Beaufort House offers elegant, flexible spaces for board meetings, presentations, training days, away-days, private dining and receptions.

With natural daylight, blackout blinds, complimentary stationery and audio-visual equipment available on request, the venue balances practical functionality with distinctive stylish spaces.



Whether for 10 guests or up to 150, it provides a sophisticated yet relaxed backdrop for corporate gatherings. Rooms may be hired by the hour or by the day, allowing organisers the flexibility to create an occasion that feels both highly professional and comfortably at home.

# THE CLUB ROOM

Located on the 1st floor, The Club Room is one of our most elegant and versatile event spaces, ideal for everything from intimate meetings to larger celebrations.

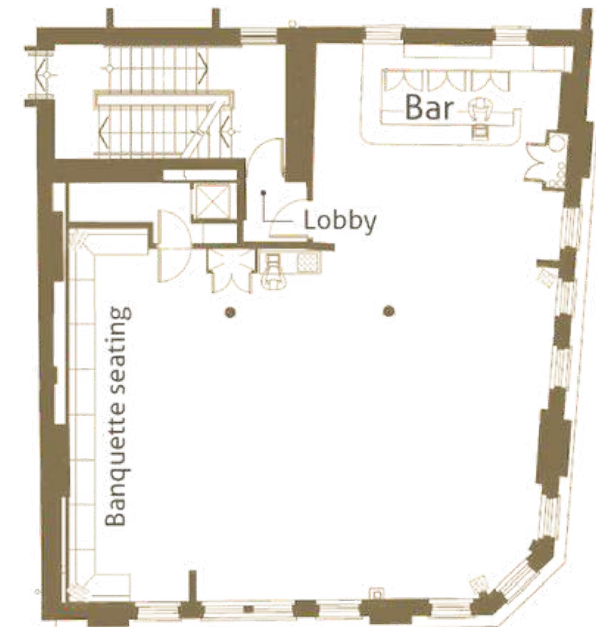
With its chic design, warm ambience and flexible layout, it offers a sophisticated yet welcoming backdrop for corporate gatherings, private dining and special events alike.

## CAPACITY

Theatre	50
Classroom	50
Boardroom	28
U-Shape	40
Cabaret	50
Lunch/Dinner	110
Dinner Dance	60
Reception	150

## DIMENSIONS

Length	10.0 m
Width	12.0 m
Height (max)	4.0 m
Height (min)	2.6 m
Door Height	2.1 m
Door Width	0.8 m



# PRIVATE DINING ROOM

The Private Dining Room at Beaufort House Chelsea is a stylish, flexible space ideal for both private dining and smaller business meetings.

With its refined interiors and welcoming atmosphere, it offers a sophisticated backdrop for everything from client lunches to boardroom discussions.

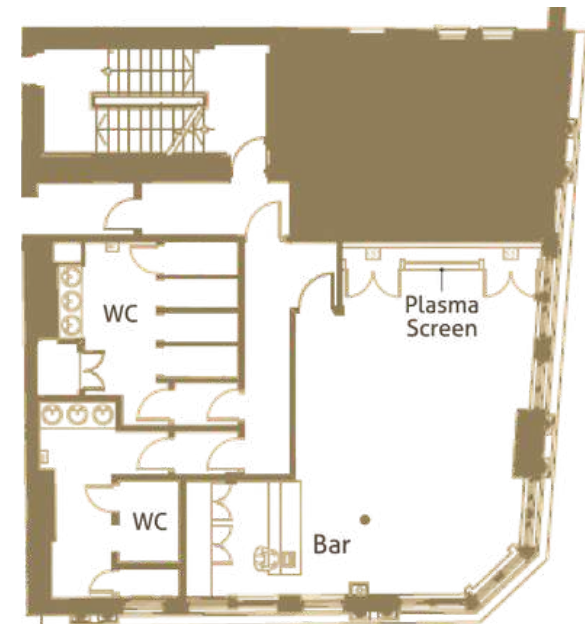


## CAPACITY

Theatre	30
Classroom	20
Boardroom	26
U-Shape	20
Cabaret	24
Lunch/Dinner	26
Reception	60

## DIMENSIONS

Length	8.0 m
Width	5.5 m
Area	42 m <sup>2</sup>
Height	2.7 m
Door Height	2.0 m
Door Width	0.8 m



# CHAMPAGNE BAR

The Champagne Bar at Beaufort House Chelsea offers an effortlessly elegant setting for celebratory drinks, relaxed gatherings and stylish evenings in refined surroundings.

With its chic décor, intimate atmosphere and vibrant sense of occasion, it is a space designed for those who appreciate understated luxury and memorable moments.

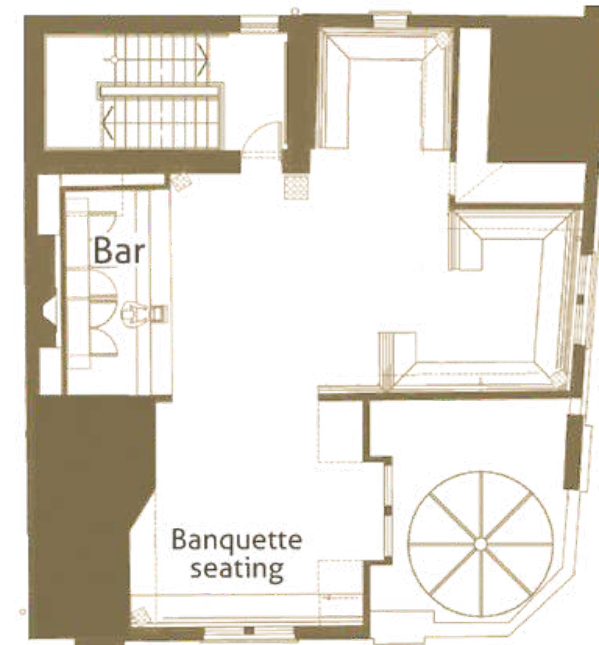


## CAPACITY

Theatre	20
Classroom	20
Boardroom	16
Cabaret	30
Lunch/Dinner	50
Dinner Dance	30
Reception	100

## DIMENSIONS

Length	12.1 m
Width	11.2 m
Height (max)	3.0 m
Height (min)	2.5 m
Door Height	2.0 m
Door Width	0.8 m



# SET MENUS

## £60 SET MENU

### STARTERS

#### **BURRATA** *v,gf*

Bitter leaves, blood orange pistachio

#### **BERGAMOT CURED SALMON**

Horseradish cream, blinis, watercress

#### **BEEF TARTARE**

Smoked egg yolk, lovage mayonnaise,  
toasted sourdough

---

### MAINS

#### **GRILLED AUBERGINE**

Romesco sauce, vegan feta,  
sherry glaze, crispy shallot

#### **PAN FRIED COD** *gf*

Butter beans, chorizo, tomato, and coriander

#### **CORN-FED CHICKEN SUPREME**

Peas, broad beans, baby potatoes, chicken jus

---

### DESSERTS

#### **CHOCOLATE MOUSSE** *v,gf*

Caramelized banana, vanilla ice cream

#### **CHEESE CAKE**

Seasonal fruit *vg*

#### **STICKY TOFFEE PUDDING**

Miso butterscotch caramel, clotted cream

## £75 SET MENU

### STARTERS

#### **WILD MUSHROOMS, ENGLISH ASPARAGUS**

Clarence Court poached egg, Hollandaise,  
sourdough breadcrumbs

#### **KING PRAWNS**

Bloody Mary butter, lemon

#### **HAM HOCK TERRINE**

Pistachio, rhubarb chutney, toasted brioche

---

### MAINS

#### **ROAST CAULIFLOWER STEAK**

Beetroot puree, golden raisins,  
fried capers and herb dressing

#### **GRILLED OCTOPUS**

Romesco sauce, baby potatoes, chorizo, lime

#### **LAMB CUTLETS**

Fondant potatoes, pea and mint purée, lamb gravy

---

### DESSERTS

#### **STICKY TOFFEE PUDDING**

Miso butterscotch caramel, clotted cream

#### **CHEESE BOARD**

Red onion chutney, crackers, celery

#### **VANILLA CRÈME BRÛLÉE**

Pickled blackberries, lemon thyme



# BOWL FOOD

MINIMUM ORDER: 10 OF A TYPE  
£7 PER UNIT

**WILD BOAR SAUSAGE AND POTATO MASH**  
with Caramelised Apple Sauce

**CHARGRILLED RIB EYE STEAK**  
with Chunky Chips and Bernaise Sauce

**CONFIT DUCK SALAD**  
with Watercress, Radish and Coriander

**CRAB AND CHILLI LINGUINE**  
with Roasted Cherry Tomatoes, Garlic and Parsley

**POACHED SALMON**  
with Colcannon, Crushed New Potatoes and Hollandaise Sauce

**WILD MUSHROOM RISOTTO**  
with Shaved Pecorino and Truffle Oil

**ROAST HERITAGE BEETROOT SALAD**  
with Apple and Goats Curd





# CANAPE MENU

MINIMUM ORDER: 10 OF A TYPE

## FROM THE LAND

CONFIT DUCK CROSTINI, Orange Jam, Coriander **£3.00**

MINI CHEESE BURGERS, House Relish, Smoked Cheddar and Burger Sauce **£3.50**

MISO GLAZED PORK BELLY, with Crackling **£3.00**

CHICKEN AND CHORIZO SKEWERS **£3.00**

BEEF TAGLIATA, Horseradish and Parmesan Crostini **£3.50**

---

## FROM THE SEA

SCALLOPS, Cauliflower Mousse **£4.00**

PRAWN TEMPURA, Spicy Mayo **£3.50**

SMOKED SALMON BLINI **£3.00**

TUNA TATAKI, Sesame Seeds, Soy and Honey Dressing **£4.00**

THAI CRAB CAKE and Nam Jim Sauce **£3.50**

---

## VEGETARIAN

MIXED MUSHROOM AND TALEGGIO ARANCINI **£3.00**

POLENTA, Caramelised Pepper and Salsa Verde (Vg) **£3.00**

MINI BEETROOT TART, with Blue Cheese **£3.00**

EGG PLANT CROSTINO, with Pecorino Shavings **£3.00**

SWEET POTATO, Hummus (Vg) **£3.00**

# A STRESS FREE EXPERIENCE

At the heart of everything we do is with you, the client, in mind. From the first enquiry to the final raise of glasses, our dedicated events team ensures every detail is handled with precision. You will have a single point of contact to manage logistics, tech, and catering, so you can focus entirely on your guests.

Relax in an environment designed for productivity and play. Beyond our versatile rooms, it is the exceptional food and drinks and our 'make it happen' attitude that keep our clients coming back, no request is too big or too small.

## SEE IT FOR YOURSELF

The best way to experience our service is in person. Book a private tour today and enjoy a fresh coffee or a glass of bubbles on us while we plan your next big success.



THE CLUB ROOM



PRIVATE DINING ROOM



PRIVATE DINING ROOM



CHAMPAGNE BAR



# FACT SHEET

---

## OPENING HOURS

### BEAUFORT HOUSE BRASSERIE

**Sunday to Wednesday** - 9 am - 12 am

**Thursday to Friday** - 9 am - 1:30 am

**Saturday** - 10 am - 1:30 am

### PRIVATE MEMBERS CLUB

**Sunday to Tuesday** - 8 am - 1:30 am

**Wednesday and Thursday** - 9 am - 2:30 am

**Friday and Saturday** - 9 am - 3:30 am

## WE OFFER

Complimentary Wi-Fi

Large Plasma Screen with appropriate cables

Flipchart / Whiteboard / Pens

Microphone / PA system

Dedicated members of staff

## ENTERTAINMENT

In house DJ available upon request



# CONTACT US

---

## LOCATION

354 King's Road, London , SW3 5UZ

## NEARBY STATIONS

**Sloane Square** - 12 min walk

**South Kensington** - 12 min walk

**Earls Court** - 12 min walk

**Fulham Broadway** - 12 min walk

## LOCATION LANDMARKS

**Chelsea Old Town Hall** - 6 min walk

**Saatchi Gallery** - 12 min walk

**Battersea Bridge** - 5 min walk

**Stamford Bridge** - 12 min walk

**The Royal Hospital Chelsea** - 15 min walk

**Chelsea Physic Garden** - 10 min walk

**National Army Museum** - 12 min walk

**Duke of York Square** - 12 min walk

## SOCIAL

[www.beauforthousechelsea.co.uk](http://www.beauforthousechelsea.co.uk)

@beauforthousechelsea

## SPECIAL EVENTS TEAM

To receive more information on your customised event package, kindly contact our dedicated Special

Events team at:

**Email: [info@beauforthousechelsea.com](mailto:info@beauforthousechelsea.com)**

**Phone: 020 7352 2828**